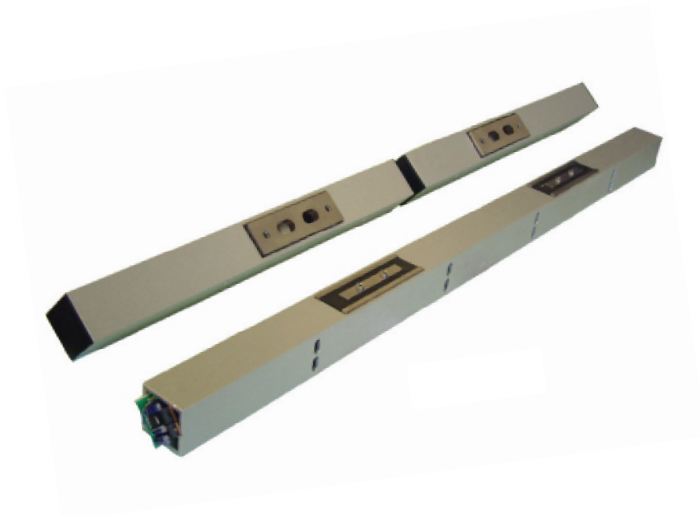


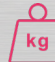


MS41

MS41 Double Shearlock



Key Features

-  Great for doors either with fixing or overhead
-  No loss of headroom in the doorway
-  High holding force for robust security

Product Description

This double surface shearlock is ideal for doors where strong, reliable locking is required without compromising aesthetics. Suitable for surface or overhead fixing, it maintains full headroom clearance. High holding force ensures robust security in commercial and high-traffic applications.

Product Specifications

	MS41D-SS
Surface Material	Satin anodised housing
Holding Force	2x 1,000kg
Mounting	Surface
Monitoring	Yes
Door Status	Yes
Dimensions	200 x 38 x 38 mm
Power Supply	12/24Vdc
Power Consumption	1.5A pull in (2 secs), 500mA continuous hold

Range References

MS41D-SS	Double surface mount compact shearlock, 2x1000kg shear force
----------	--

Accessories

MS41FCM	Pair of flush centring magnets
---------	--------------------------------